

SOZIALE INITIATIVE



GEMEINNÜTZIGE
GESELLSCHAFT MBH

Soziale Initiative



**Mentoring
and
residential care**

Our Approach

entering into a personal working relationship
with the young person

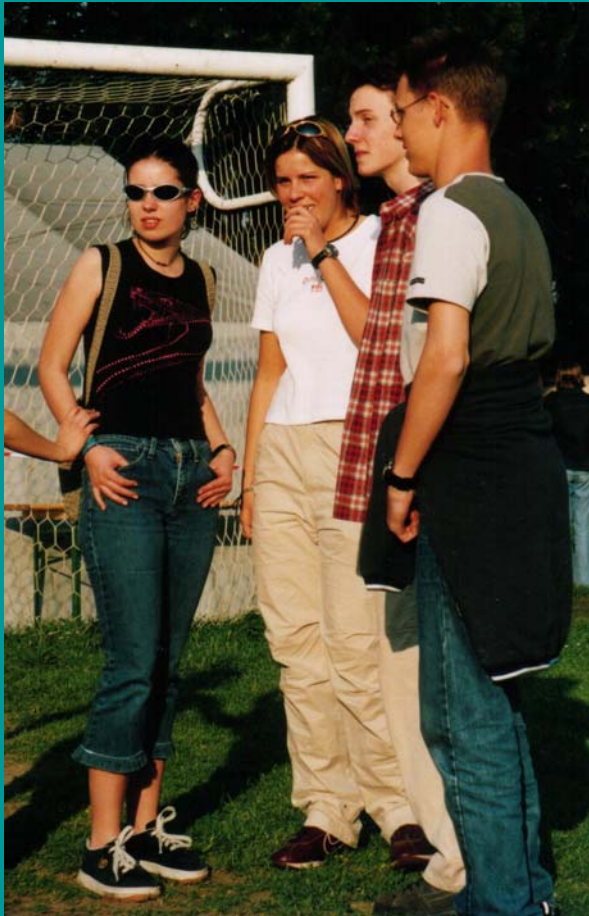
challenging and promoting development of
the young person

accompanying them
in their environment

working also with
parents, teachers ...



Forms of Care



- Clearing
- Conflict Work
- Relationship Work
- Stabilising

Aims

are agreed with
the young person,
the welfare agency
and the guardian

Orientation in life

Accompanying
to adulthood

Learning to take
responsibility



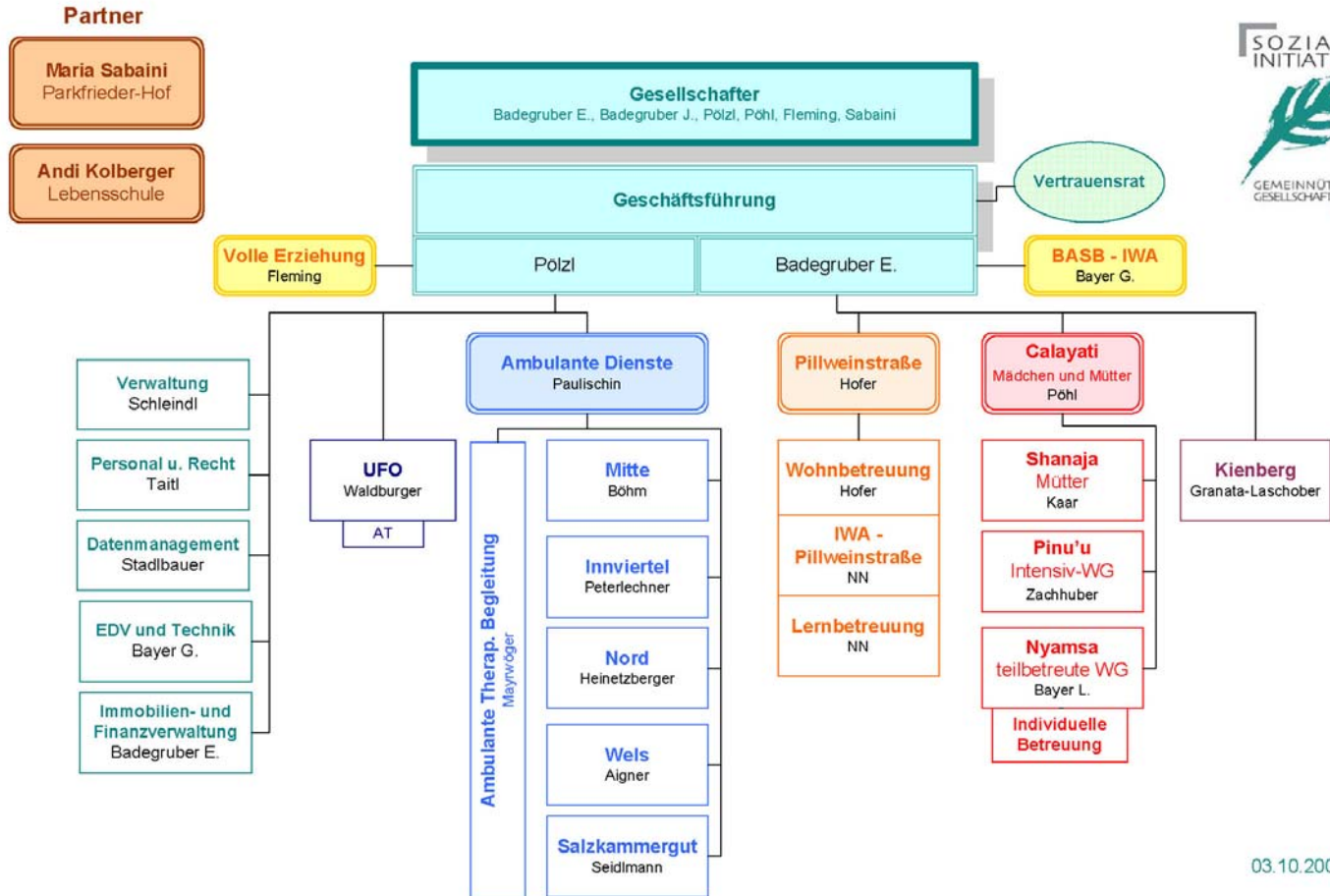
Aims

examples

- Success in school
- Career guidance
- Learning to live independently
- How to organize free time
- Promotion of creative and cultural interests



Soziale Initiative



Mission Statement

Our unconditional positive regard for human beings opens for us creative and individual ways of working.



Mission Statement

We trust in the potential of the individual.



Mission Statement

In relationship
we accompany
the process
to a self-confident
and independent Me.

